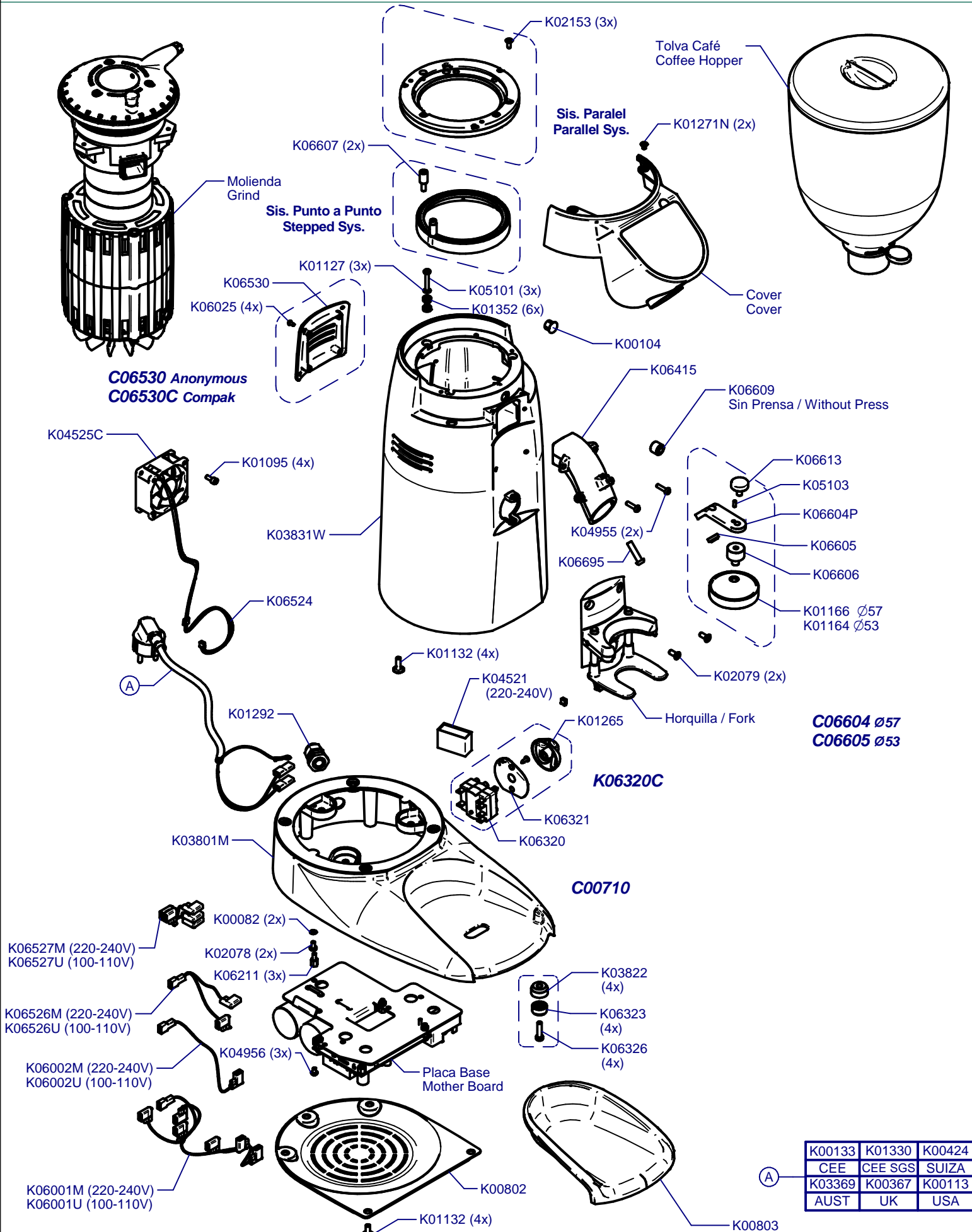


E10 Essential Master Conic On Demand

Updated 19/04/2017



K02153 (3x)

Tolva Café
Coffee Hopper

K06607 (2x)

Sis. Paralel
Parallel Sys.

K01271N (2x)

Molienda
Grind

Sis. Punto a Punto
Stepped Sys.

K06530

K01127 (3x)

K05101 (3x)

K01352 (6x)

K00104

K06025 (4x)

K06415

K06609
Sin Prensa / Without Press

**C06530 Anonymous
C06530C Compak**

K04525C

K01095 (4x)

K03831W

K04955 (2x)

K06613

K05103

K06604P

K06605

K06606

K01166 Ø57
K01164 Ø53

A

K01292

K01132 (4x)

K04521
(220-240V)

K06695

Horquilla / Fork

**C06604 Ø57
C06605 Ø53**

K06320C

C00710

K03801M

K06321

K06320

K06527M (220-240V)
K06527U (100-110V)

K06526M (220-240V)
K06526U (100-110V)

K06002M (220-240V)
K06002U (100-110V)

K06001M (220-240V)
K06001U (100-110V)

K00082 (2x)

K02078 (2x)

K06211 (3x)

K04956 (3x)

Placa Base
Mother Board

K03822
(4x)

K06323
(4x)

K06326
(4x)

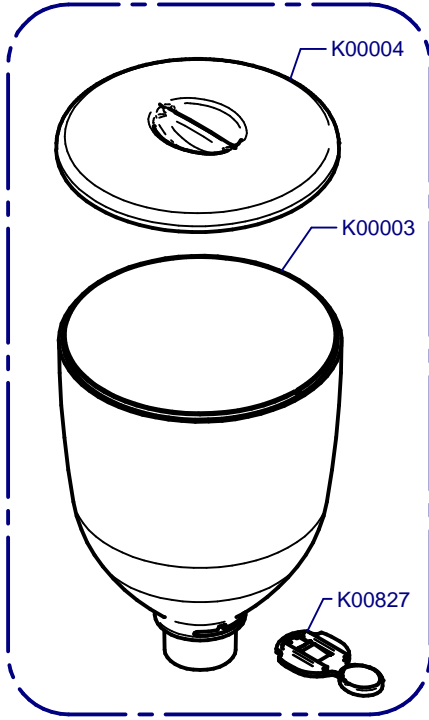
K00802

K01132 (4x)

A

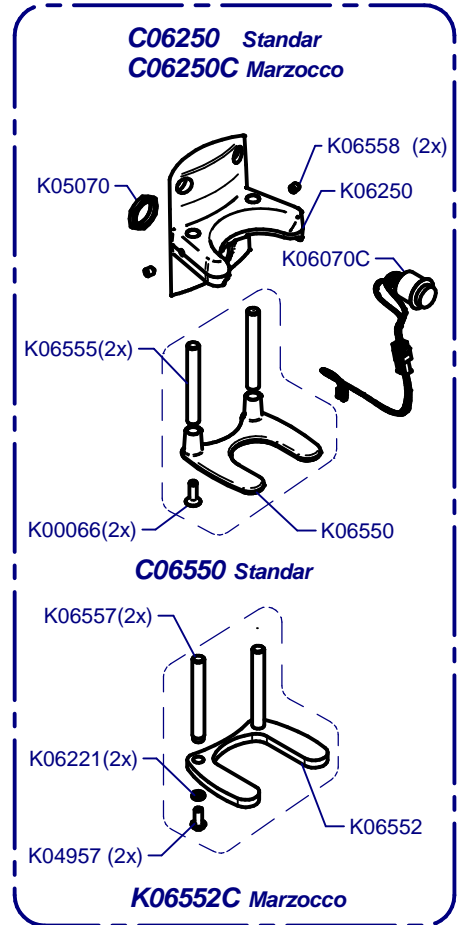
K00803

Tolva Café / Coffee Hopper

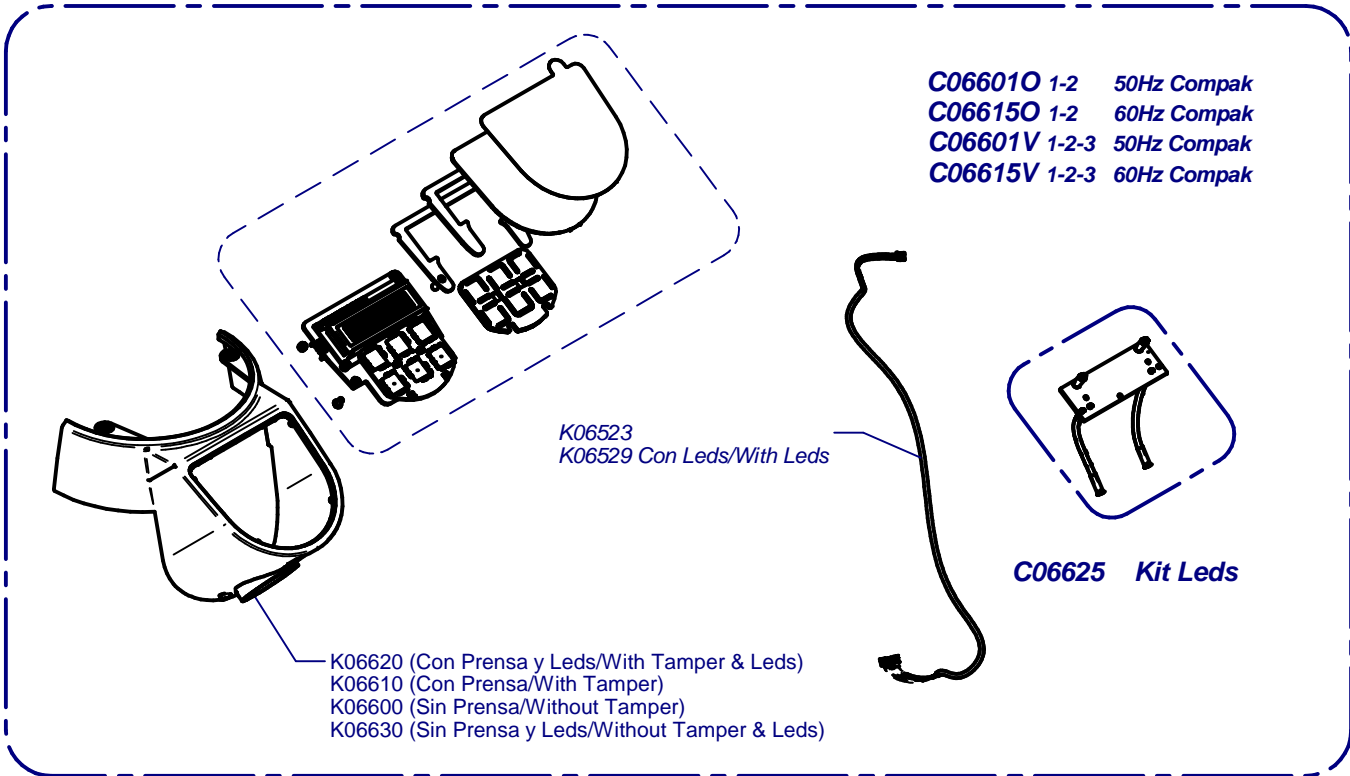


K01358

Horquilla / Fork



Cover / Cover



- C06601O 1-2 50Hz Compak
- C06615O 1-2 60Hz Compak
- C06601V 1-2-3 50Hz Compak
- C06615V 1-2-3 60Hz Compak

K06523
K06529 Con Leds/With Leds

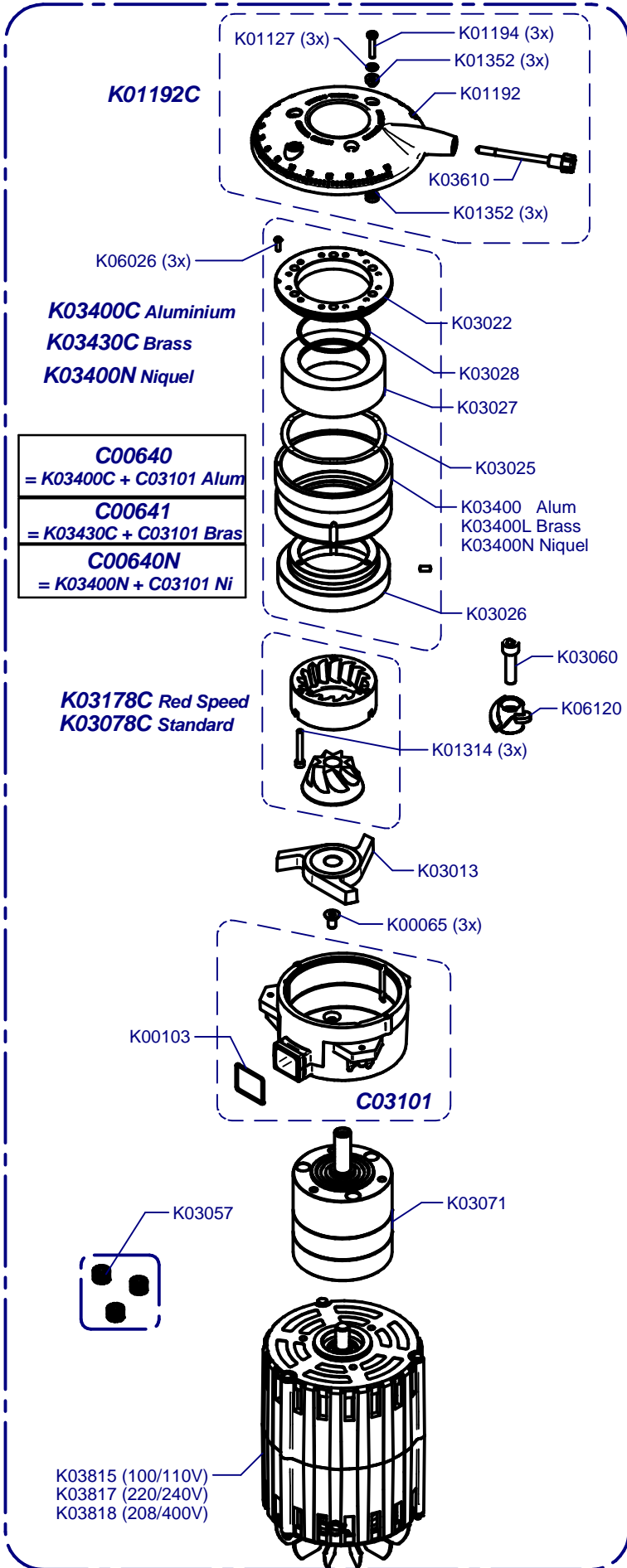
- K06620 (Con Prensa y Leds/With Tamper & Leds)
- K06610 (Con Prensa/With Tamper)
- K06600 (Sin Prensa/Without Tamper)
- K06630 (Sin Prensa y Leds/Without Tamper & Leds)

C06625 Kit Leds

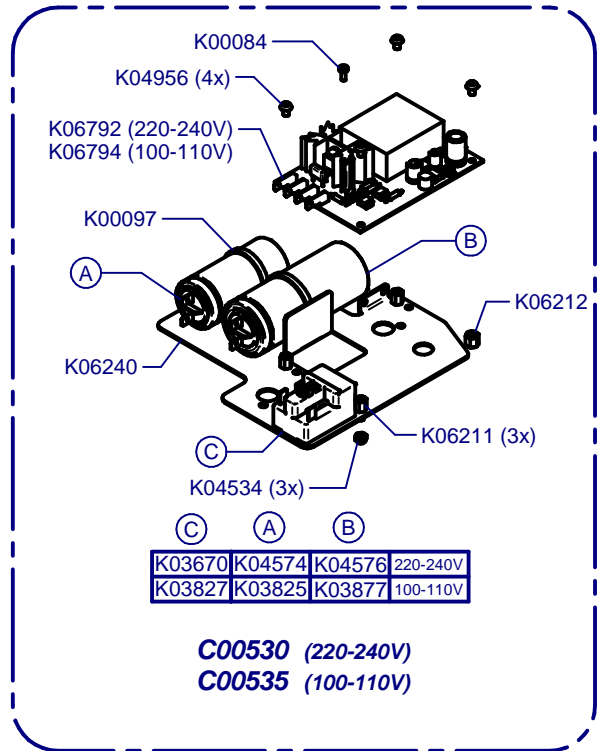
E10 Essential Master Conic On Demand

Updated 19/04/2017

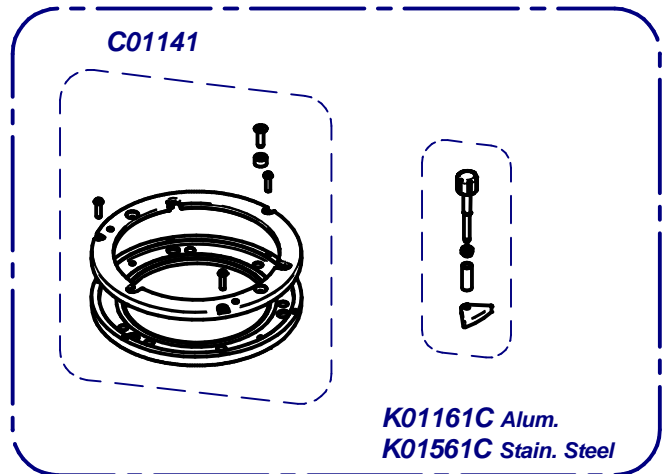
Molienda / Grind



Placa Base / Mother Board



Sis. Paralel / Parallel Sys.



Sis. Punto a Punto / Stepped Sys.

