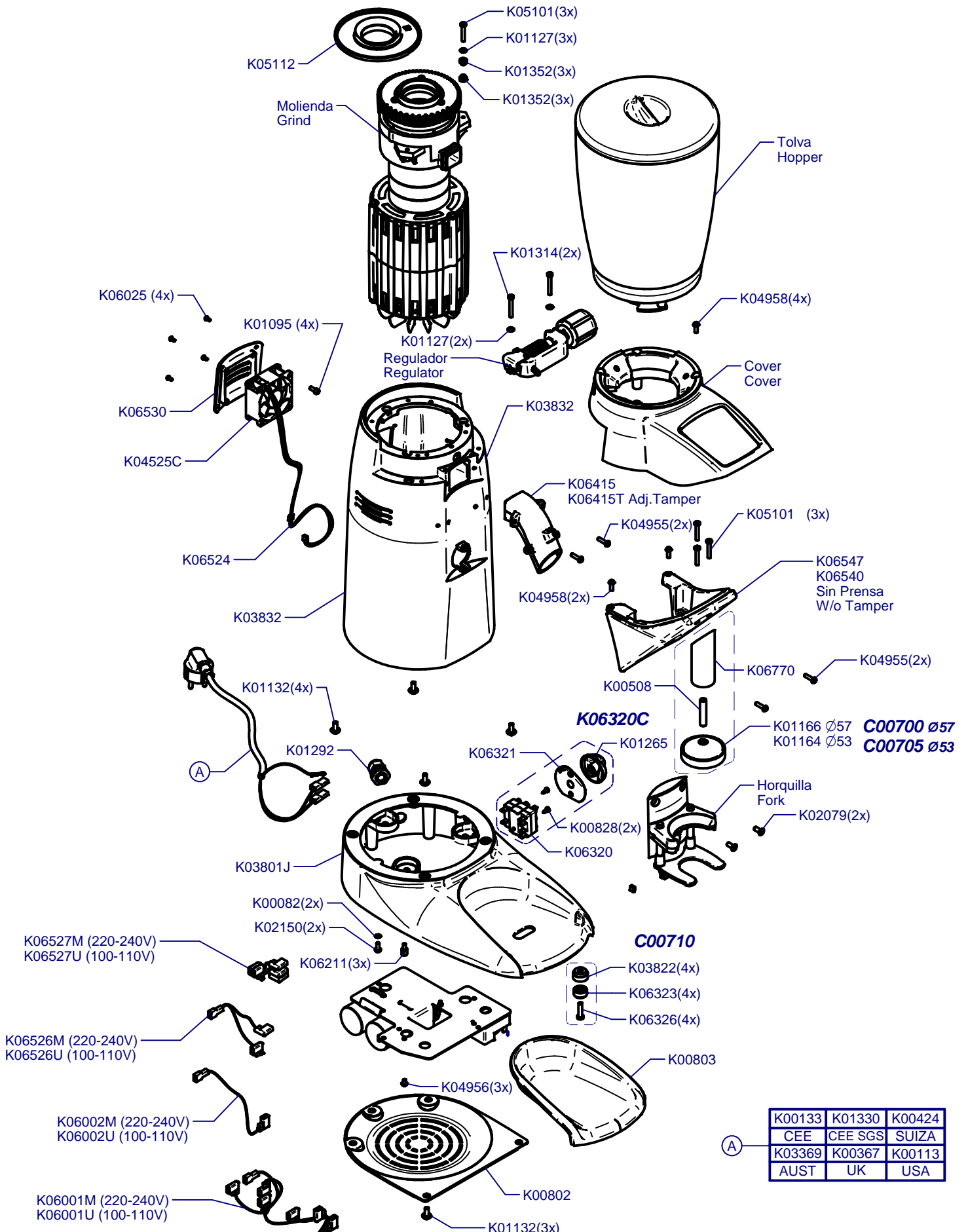


F10 Fresh Master Conic On Demand

Updated 20/04/2017



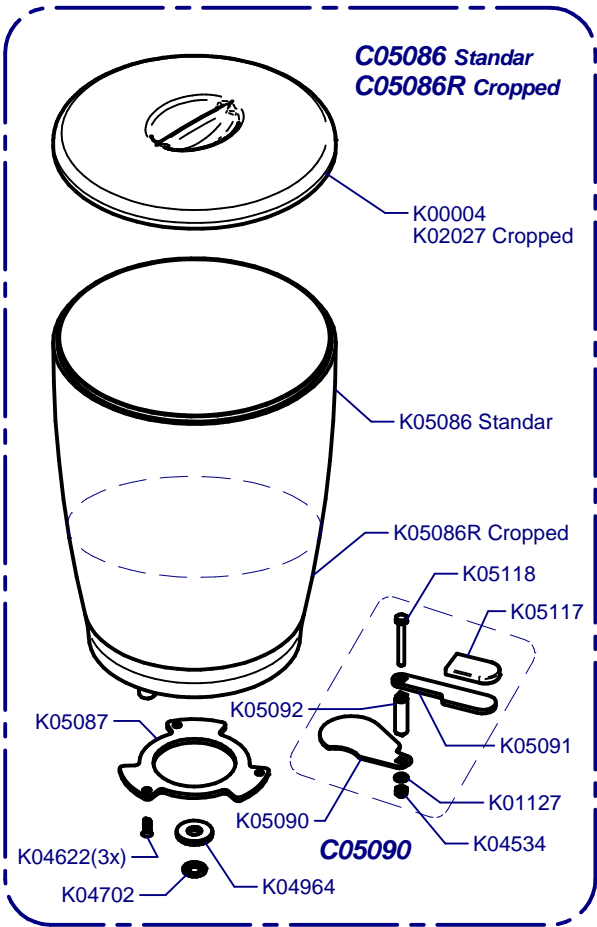
|        |         |        |
|--------|---------|--------|
| K00133 | K01330  | K00424 |
| CEE    | CEE SGS | SUIZA  |
| K03369 | K00367  | K00113 |
| AUST   | UK      | USA    |

A

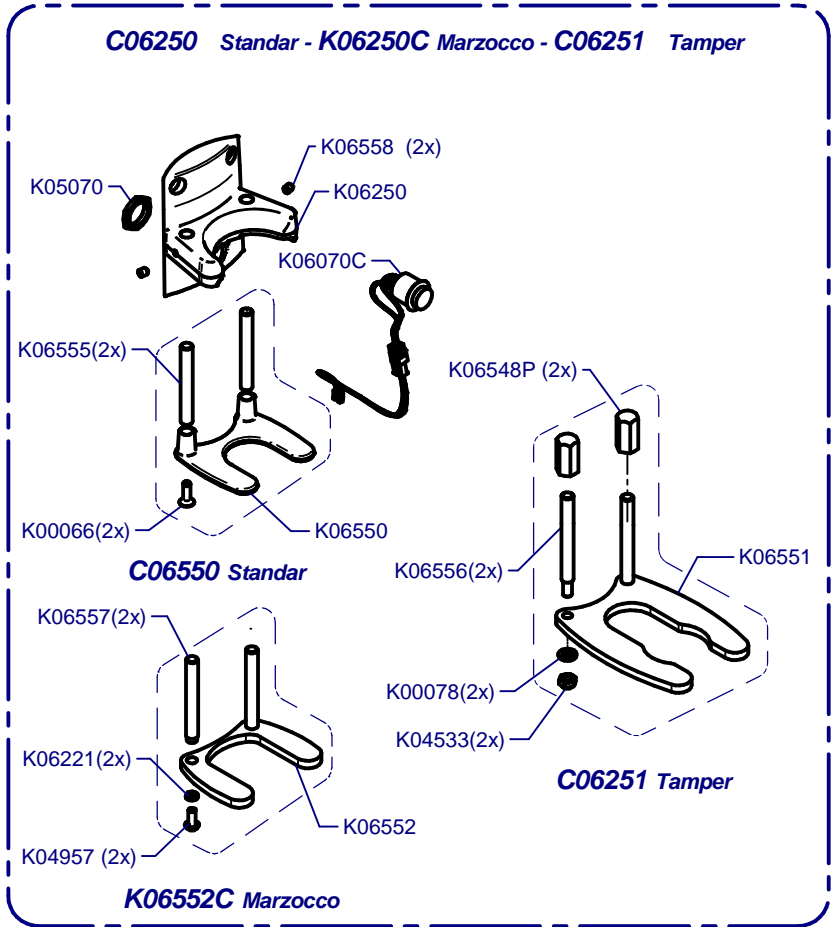
**F10 Fresh Master Conic On Demand**

Updated 20/04/2017

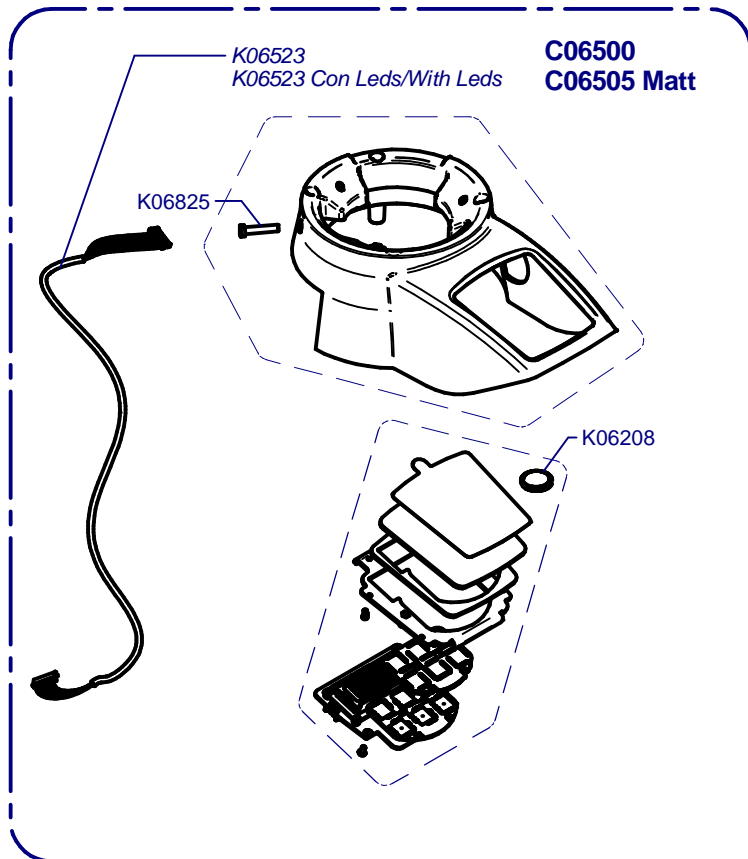
**Tolva / Hopper**



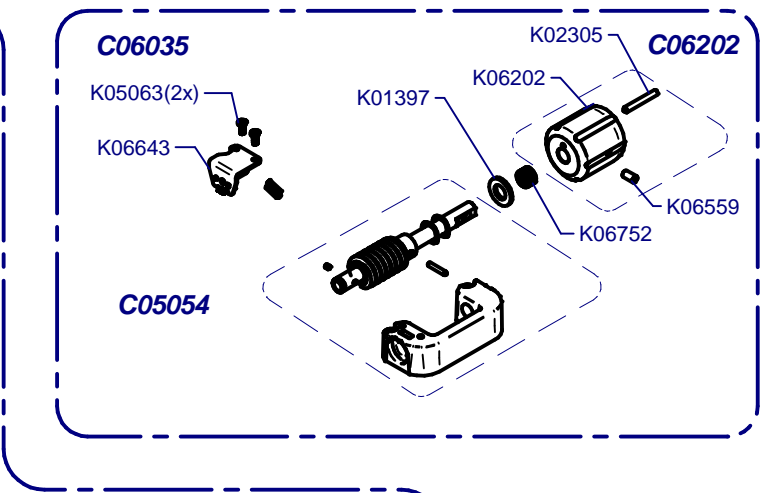
**Horquilla / Fork**



**Cover / Cover**



**Regulador / Regulator**

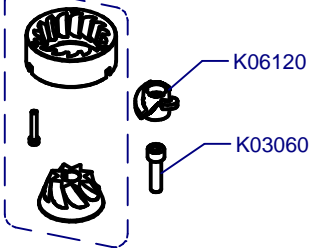
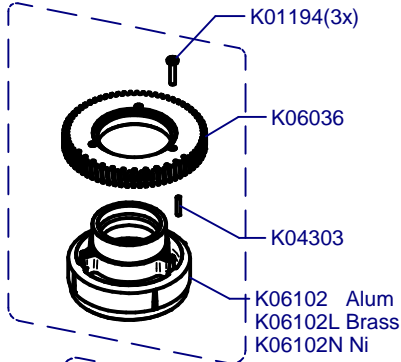


**Molienda / Grind**

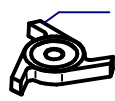
**C00620 Aluminium**

**C00625 Brass**

**C00620N Niquel**



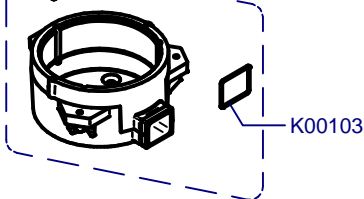
**K03078C Standard**  
**K03178C Red Speed**



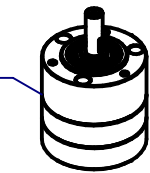
K00065(3x)

K02056

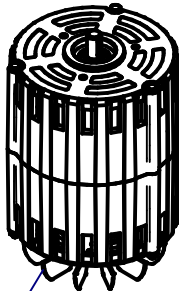
**K00615**



K03071



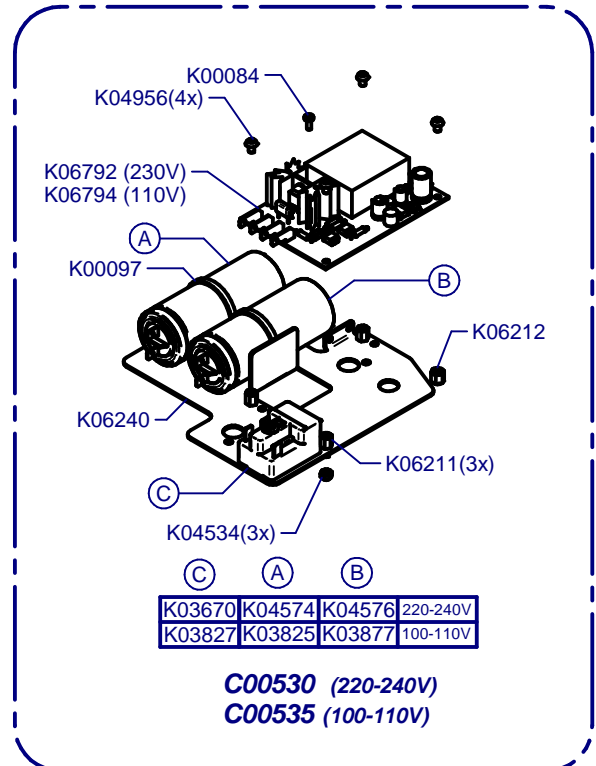
K03057



K03815 (100/110V)  
K03817 (220/240V)  
K03818 (208/400V)

|   |
|---|
| <b>C00633</b><br>= C00620 + K00615 Alum |
| <b>C00632</b><br>= C00625 + K00615 Bras |
| <b>C00633N</b><br>= C00620N + K00615 Ni |

**Placa Base / Mother Board**



|        |        |        |          |
|--------|--------|--------|----------|
| (C)    | (A)    | (B)    |          |
| K03670 | K04574 | K04576 | 220-240V |
| K03827 | K03825 | K03877 | 100-110V |

**C00530 (220-240V)**  
**C00535 (100-110V)**

**Prensa Regulable / Adjustable Tamper**

