

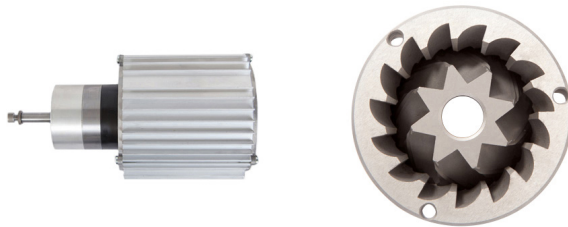
# F8 OD

## GRINDING TO THE NEXT LEVEL

MOTOR 610 W  
BURRS Ø 83 MM

### KEY SPECIFICATIONS

Motor output	610	W
Revolutions per minute	1.290	rpm
Ø Burrs	83	mm
Espresso point production	15	Kg/h
Time x dosis Espresso (7gr)	1,6	s
Hopper capacity	1,9	Kg
Height x width x depth	660 x 215 x 400	mm
Net weight	13	Kg



### KEY FEATURES

- ◆ Bean flow control via high precision auger
- ◆ 1, 2 or 3 On-Demand ground coffees
- ◆ Precise dosing
- ◆ Push button "Grind" for manual dosing
- ◆ Motor with fan
- ◆ Three positions switch with by-pass
- ◆ Universal adjustable height porta filter holder

### ELECTRONIC FEATURES

- ◆ Multilanguage display
- ◆ 3 Modes: Pre-selection - Automatic - Instant
- ◆ Protection menu access by password
- ◆ Total and Partial shot counter
- ◆ Notice of change of burrs
- ◆ Digital grind point scale display
- ◆ Date and time