

MASTER
CONICAL ENGINEERING

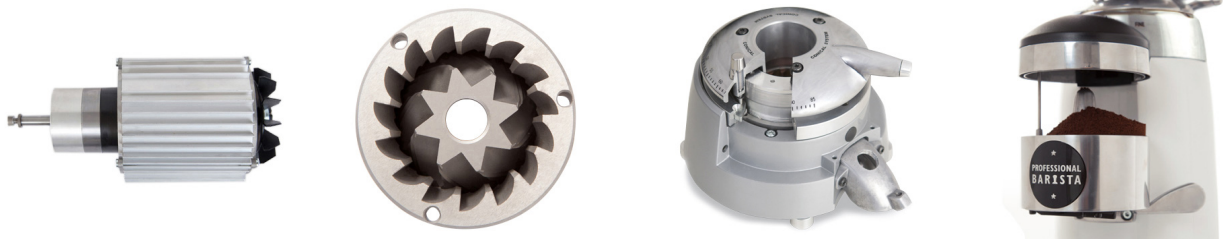
K10 Master Conic PB

BARISTA RULE

MOTOR 950 W
CONICAL BURRS Ø 68 MM

KEY SPECIFICATIONS

Motor output	950	W
Revolutions per minute	342,5	rpm
Ø Burrs	Conic 68	mm
Espresso point production	17	Kg/h
Hopper capacity	1.700	gr
Height x width x depth	680 x 215 x 400	mm
Net weight	20,50	Kg



KEY FEATURES

- ◆ “Parallel System” grind regulator lock
- ◆ 4 cm height riser with side air vents
- ◆ Double fan
- ◆ Ergonomic Doser lid for easy removal
- ◆ Special Barista doser without builtin tamper
- ◆ Aluminum star doser with high efficiency sweepers
- ◆ Full aluminum grinding collar adjustment and fork
- ◆ Aluminum portafilter rest
- ◆ High resistance power switch
- ◆ Illuminated on/off switch

